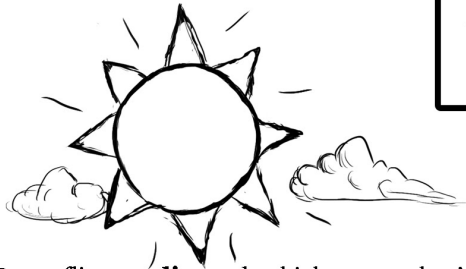


## How are butterflies different from moths?

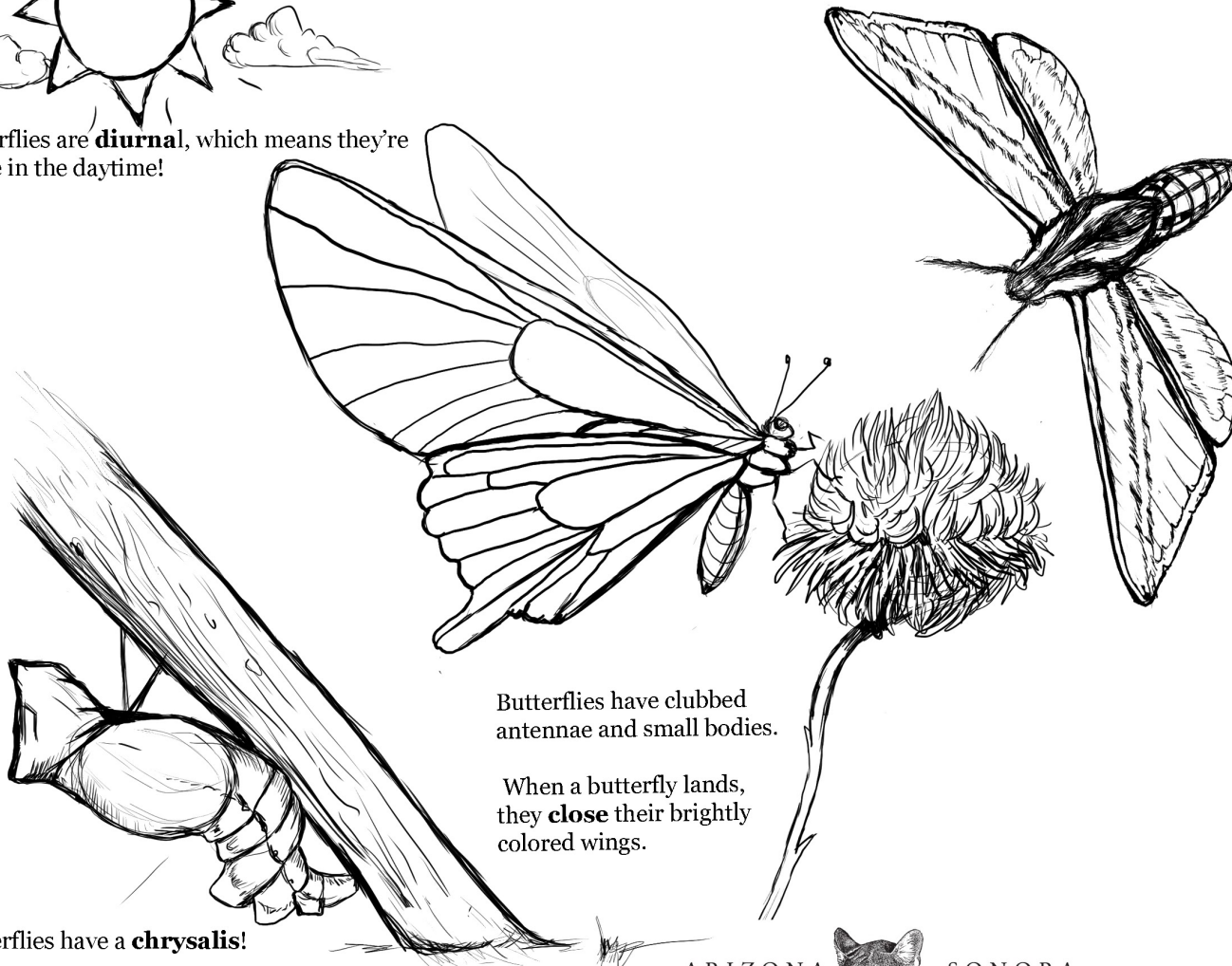
Featuring a Pipevine Swallowtail Butterfly and a White-Lined Sphinx Moth



Butterflies are **diurnal**, which means they're active in the daytime!



Moths are active at night. That makes them **nocturnal**!



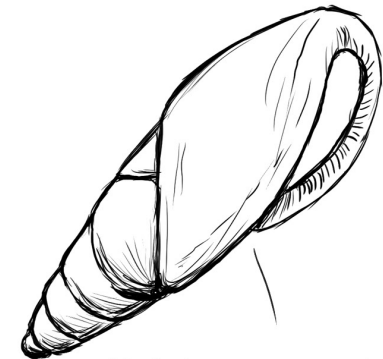
Butterflies have clubbed antennae and small bodies.

When a butterfly lands, they **close** their brightly colored wings.

From their antennae to their wings, every part of a moth's body looks fuzzy.

Their bodies are chubby and usually **dull** colored.

When they land, they keep their wings **open**.



Moths have a **cocoon**!

Butterflies have a **chrysalis**!

