

# Coniferous Forests Are Dying In Southern Arizona

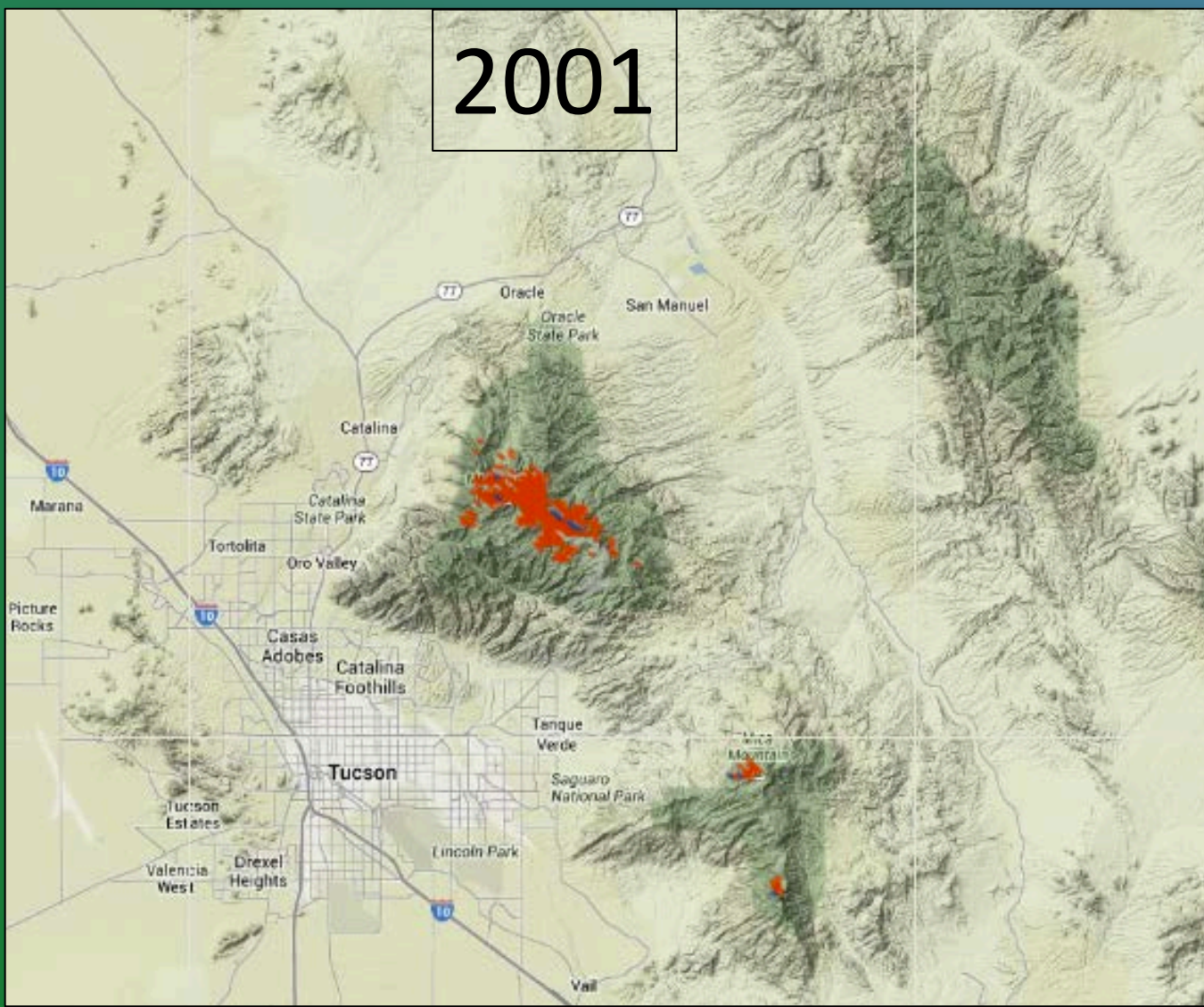
Carl Dickason, Sabino High School, Tucson, AZ Earth Camp for Educators 2013



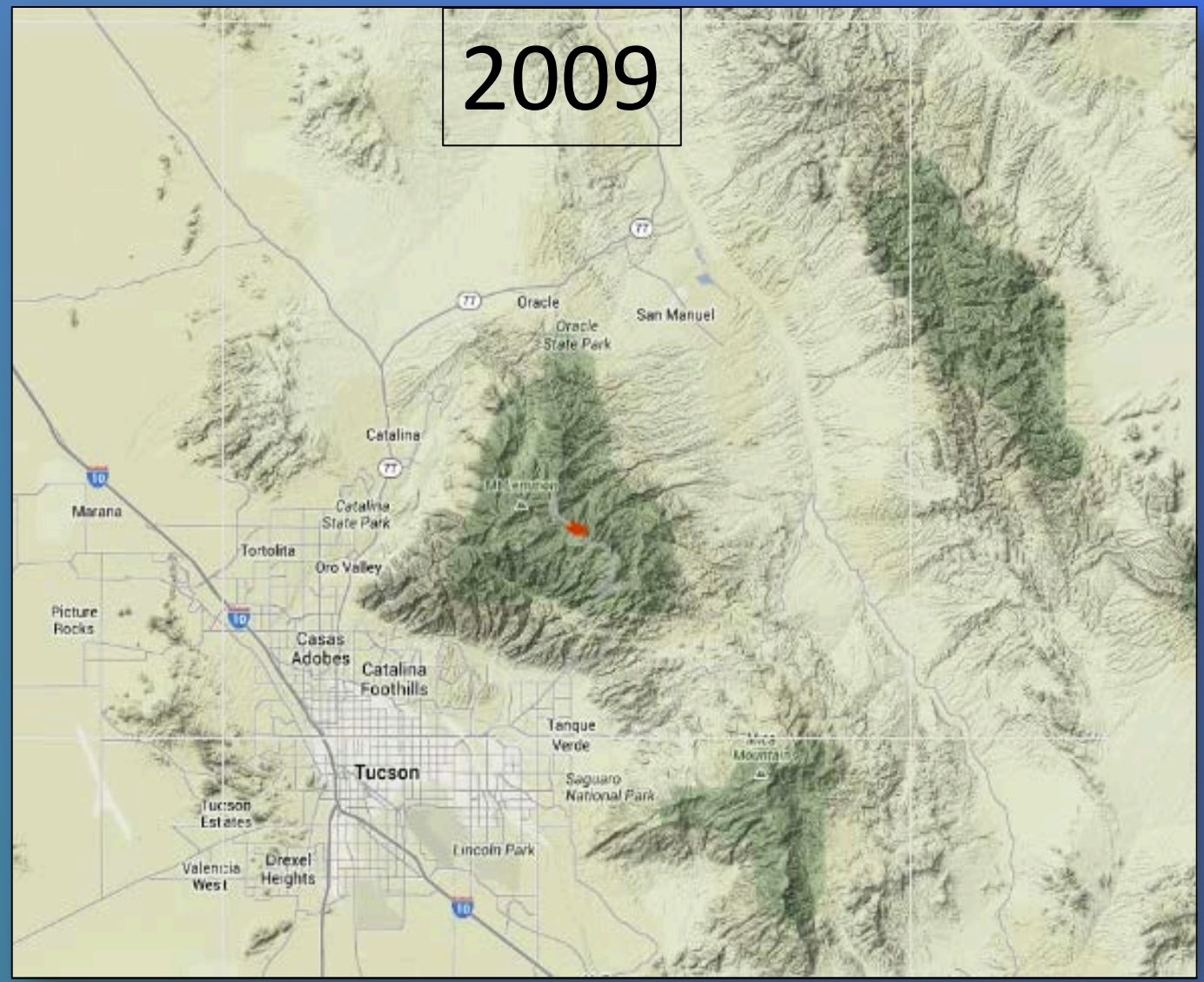
The Power of Perspective

Artist's view of a U.S. Landsat satellite. Credits: NASA.

Since 2001, the amount of healthy coniferous forest on mountain ranges in southern Arizona has been significantly reduced. This affects tourism and recreation as well as the ecology of the mountaintops. It also affects erosion and water run-off. Contributing factors are bark beetle infestation and forest fires. Drought has almost certainly contributed to susceptibility of trees to both fire and insects.

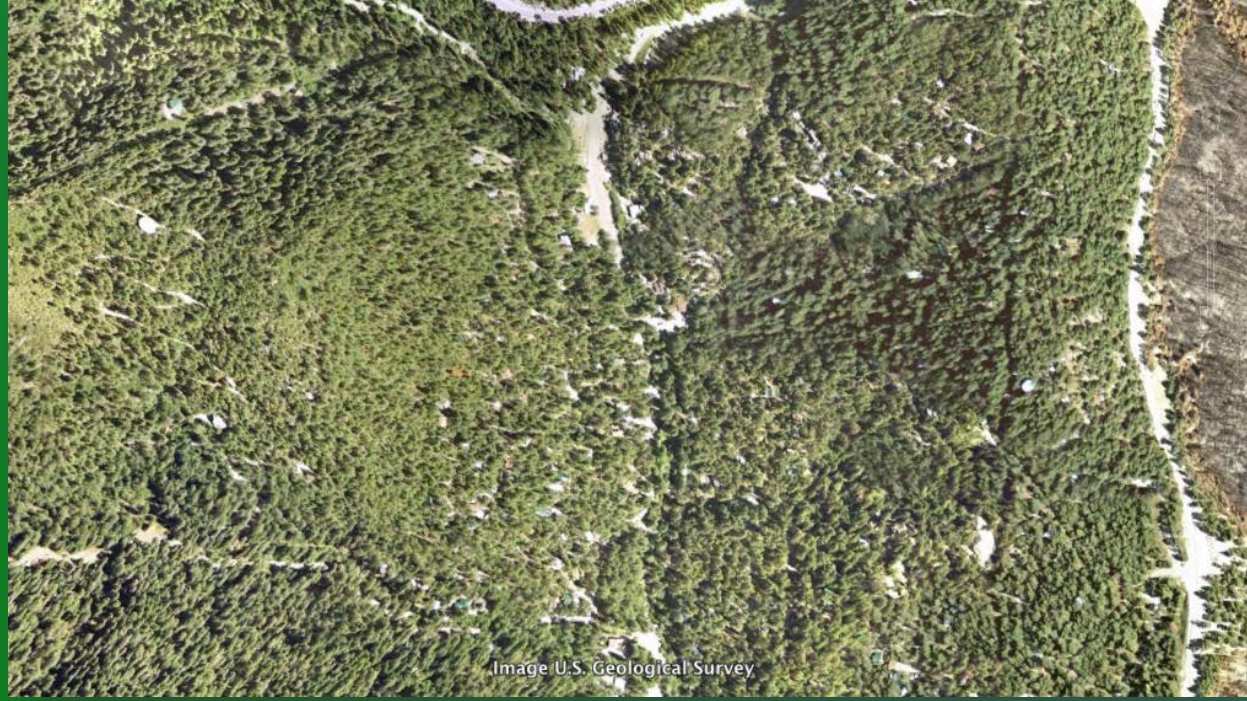


Red=Healthy Coniferous Forest



Modis Land cover (MCD12Q1) imagery courtesy of Google Earth Engine's Trusted Tester Program.

Summerhaven, AZ 2002



Summerhaven, AZ 2011

Images from Google Earth



- ### Impacts
- Forestry Products Industry - Loss of wood
  - Tourism/Recreation - Loss of tourism dollars
    - Water/Snow storage and runoff issues
    - Erosion - Soil loss and riparian impacts
    - Loss of Habitat - changes in ecosystems

Mt. Lemmon Spring 2013



Copyright Carl Dickason 2013

This exhibit is based upon work supported by NASA under award #NNX10AK14G. Any opinions, findings, conclusions or recommendations expressed in this material are those of the author and do not necessarily reflect the views of the National Aeronautics and Space Administration.

